



Flat 9a Wickham Avenue, Bexhill-On-Sea, TN39 3EP

£895 PCM

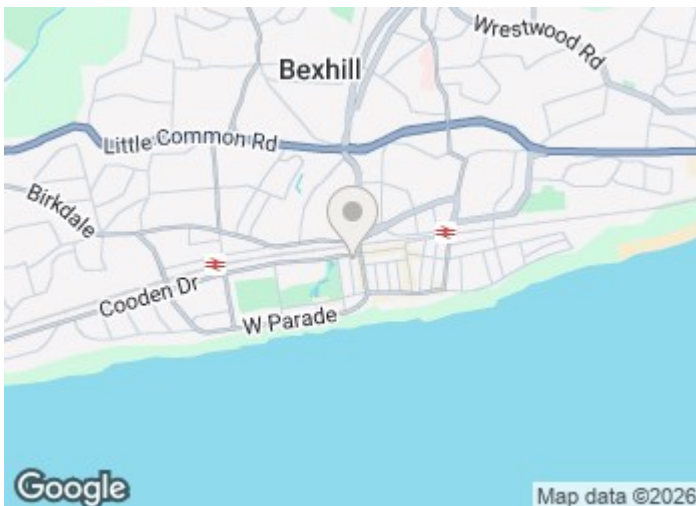
Conveniently located two bedroom flat in the Centre of Bexhill on Sea. Close to the seafront, train station and local shops. Please contact Maltbys on 01424 730678 for more information.

Flat 9a Wickham Avenue, Bexhill-On-Sea, TN39 3EP

£895 PCM



- Two Bedrooms
- Convenient Transport Links
- Available From End of January
- Town Centre
- 2nd Floor Flat
- Close to Seafront
- EPC: D

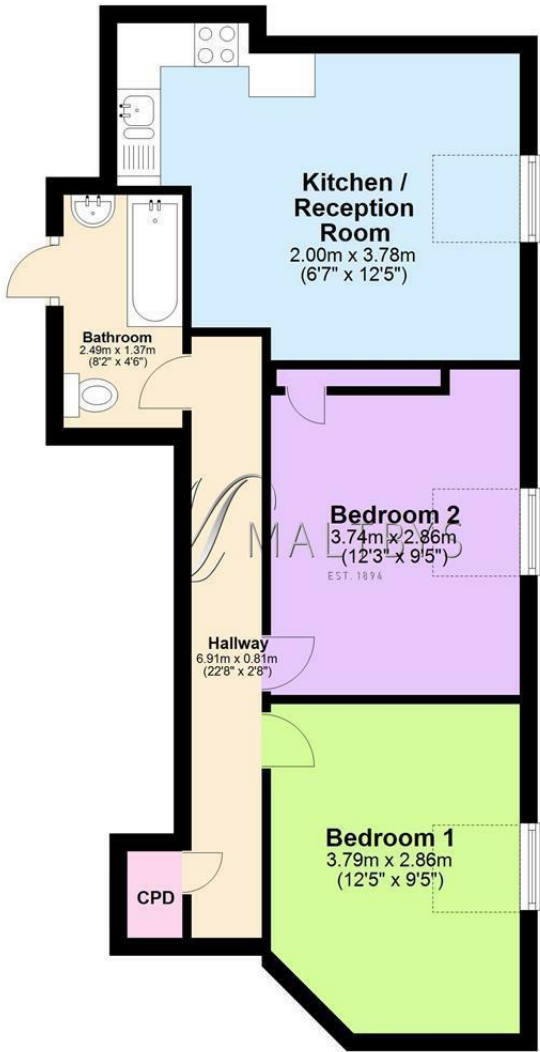


Directions

Tel: 01424 730678



Flat 9A, Wickham Av.
Approx. 47.4 sq. metres (509.9 sq. feet)



Energy Efficiency Rating	
Current	Potential
Very energy efficient - lower running costs	
(92 plus) A	
(81-91) B	
(69-80) C	
(55-68) D	
(39-54) E	
(21-38) F	
(1-20) G	
Not energy efficient - higher running costs	
England & Wales	
EU Directive 2002/91/EC	

Environmental Impact (CO ₂) Rating	
Current	Potential
Very environmentally friendly - lower CO ₂ emissions	
(92 plus) A	
(81-91) B	
(69-80) C	
(55-68) D	
(39-54) E	
(21-38) F	
(1-20) G	
Not environmentally friendly - higher CO ₂ emissions	
England & Wales	
EU Directive 2002/91/EC	

These particulars, whilst believed to be accurate are set out as a general outline only for guidance and do not constitute any part of an offer or contract. Intending purchasers should not rely on them as statements of representation of fact, but must satisfy themselves by inspection or otherwise as to their accuracy. No person in this firms employment has the authority to make or give any representation or warranty in respect of the property.